



**Shaun Harris**  
0829560599  
sales@sitari.co.za



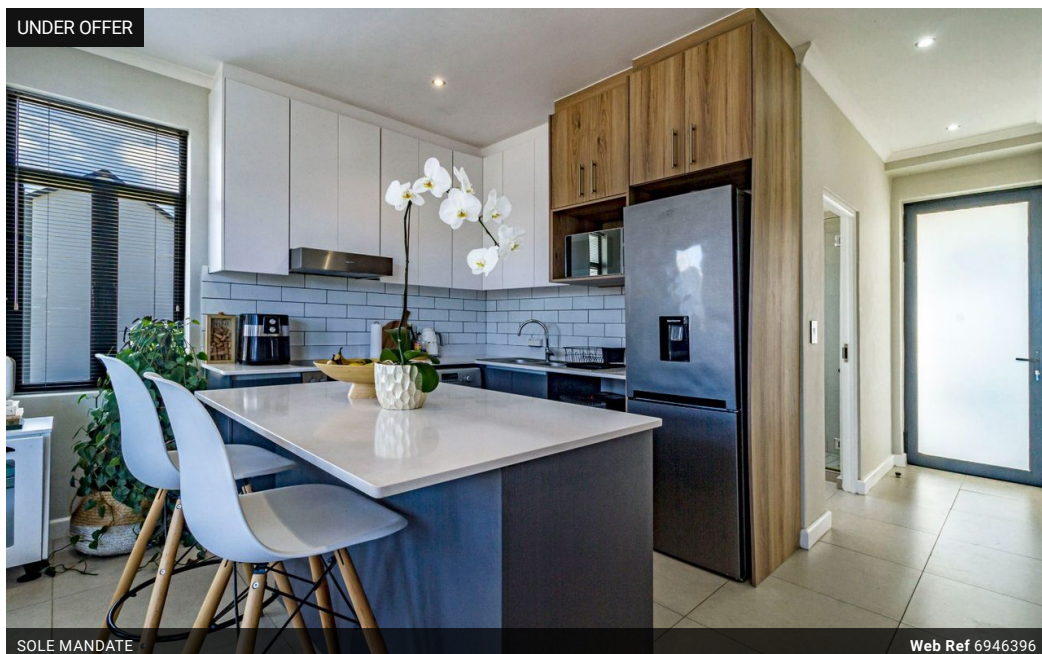
**Trix De Waal**  
0766635812  
sales@sitari.co.za

Contact Somerset West

021 2017337

Sitari Property Sales  
Sitari Country Estate  
Old Main Rd  
Somerset West  
7130

UNDER OFFER



SOLE MANDATE

Web Ref 6946396



R1,995,000

**Monthly Bond Repayment** R20,253.82

Calculated over 20 years at 10.75% with no deposit.

**Transfer Costs** R74,906.00 **Bond Costs** R32,760.00

These calculations are only a guide. Please ask your conveyancer for exact calculations.

**Monthly Levy** R1,825



### 2-Bedroom 2-bathroom Corner Unit with Abundant Natural Light – Sitari

This beautifully presented 2-bedroom, 2-bathroom corner unit on the first floor offers a bright and spacious living space, perfect for modern living. Located in Waterford Place, this property boasts plenty of natural light throughout, thanks to its ideal north-west facing position in a desirable build up area in Sitari Country Estate.

#### Key Features:

2 Bedrooms: Spacious and well-lit with natural light.

2 Bathrooms: One en-suite bathroom with the main bedroom, and a family bathroom featuring a full bathroom with a bath.

Corner Unit: Enjoy extra privacy and light with a corner unit offering panoramic views.

Extended Patio: A delightful, extended patio wrapping around the corner, ideal for outdoor entertainment and relaxing.

North-West Facing: Take advantage of natural sunlight throughout the day, creating a warm and...

### Features

#### Interior

Bedrooms	2
Bathrooms	2
Kitchens	1
Recep. Rooms	1

#### Exterior

Carports / Parkings	2
Security	No
Pool	No

#### Sizes

Floor Size	84m <sup>2</sup>
------------	------------------

