



Shaun Harris
0829560599
sales@sitari.co.za



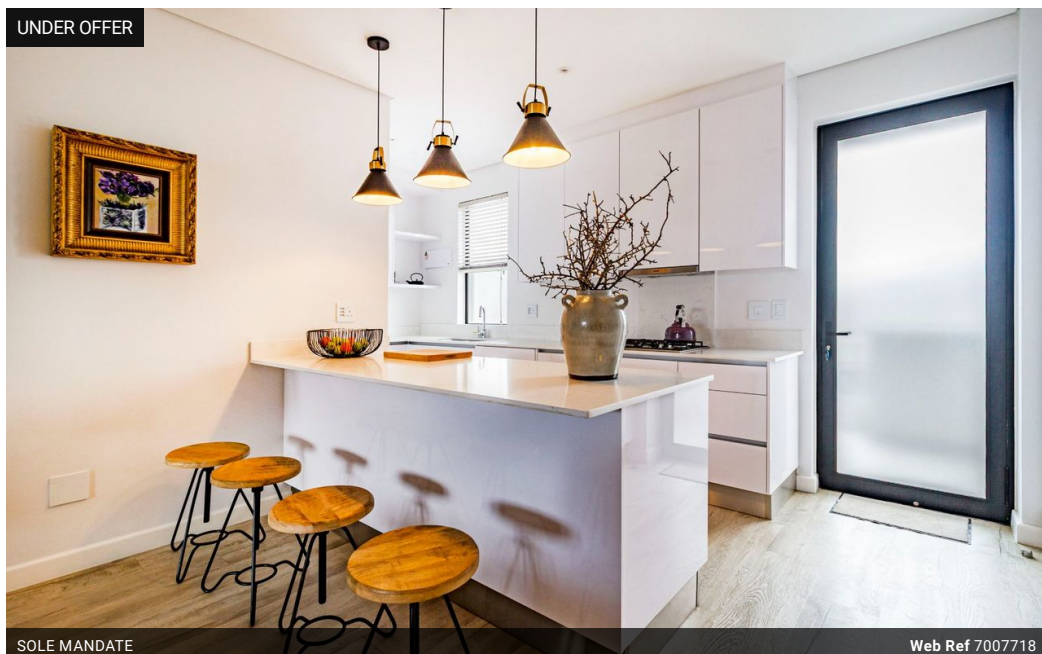
Trix De Waal
0766635812
sales@sitari.co.za

Contact Somerset West

021 2017337

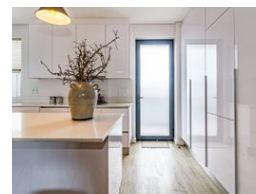
Sitari Property Sales
Sitari Country Estate
Old Main Rd
Somerset West
7130

UNDER OFFER



SOLE MANDATE

Web Ref 7007718



R2,295,000

Monthly Bond Repayment R23,688.72

Calculated over 20 years at 11% with no deposit.

Transfer Costs R97,838.00 **Bond Costs** R36,530.00

These calculations are only a guide. Please ask your conveyancer for exact calculations.

Monthly Levy R3,122 **Monthly Rates** R774



Spacious 2-Bed, 2-Bath in sought-after Meadow Lane

This sought-after Meadow Lane unit offers modern comfort and convenience in a secure, tranquil setting. Featuring two spacious bedrooms and two bathrooms - main en-suite.

The open-plan kitchen is fitted with an integrated fridge/freezer, electric oven, and gas hob, seamlessly flowing into the living area and enclosed patio - ideal for entertaining all year-round. Stay comfortable in air conditioning and enjoy the extra storage space provided with its large storage unit.

Don't miss this rare opportunity to own a large, well-appointed unit in a highly desirable estate.

Features

Interior

Bedrooms	2
Bathrooms	2
Kitchens	1
Recep. Rooms	1

Exterior

Carports / Parkings	2
Security	Yes
Pool	No

Sizes

Floor Size	99m ²
------------	------------------

