

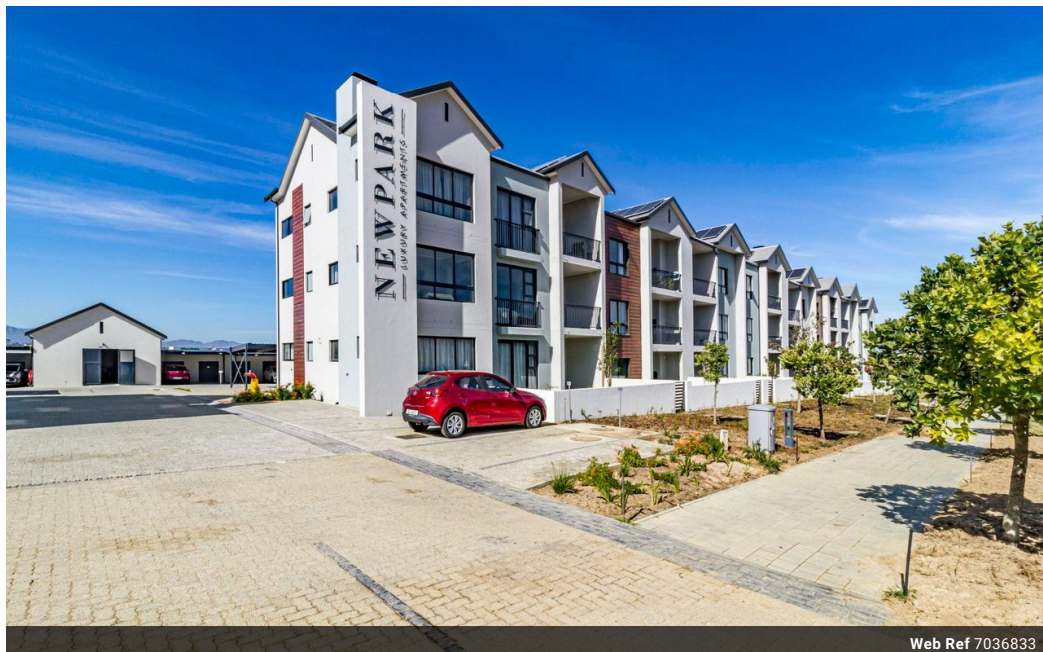


Julian Van Wyk  
079 722 0503  
julian@sitari.co.za

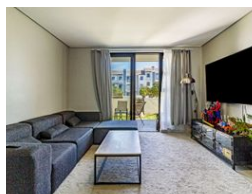
Contact Somerset West

021 2017337

Sitari Property Sales  
Sitari Country Estate  
Old Main Rd  
Somerset West  
7130



Web Ref 7036833



R17,000 pm

Lease Period None Availability Immediately Deposit - Annual Escalation -

2 2.5

### NEWLY BUILT GROUND-FLOOR APARTMENT TO RENT IN NEWPARK, SITARI COUNTRY ESTATE

#### ON SHOW BY APPOINTMENT

Perfect for families or professionals seeking both comfort and space, these units are move-in ready and offer a secure, upscale lifestyle in one of Somerset West's most prestigious estates.

#### APARTMENT FEATURES:

- 2 Generously sized bedrooms
- 2.5 Spacious bathrooms
- Expansive open-plan living area with a built-in braai
- Contemporary open-plan kitchen with sleek finishes
- Private storage unit for additional convenience
- 2 dedicated covered parking bays
- Solar Geyser for energy efficiency
- Pet-friendly

#### HIGHLIGHTS OF SITARI COUNTRY ESTATE:

• Iconic gatehouse featuring an estate gym & Makaya coffee shop

### Features

Pets Allowed		Yes			
Interior				Sizes	
Bedrooms	2			Floor Size	90m <sup>2</sup>
Bathrooms	2.5			Land Size	40m <sup>2</sup>
Kitchens	1				
Recep. Rooms	1				
Exterior					
Carports / Parkings	2				
Security	Yes				
Pool	No				